

Consumer IP Camera

NETWORK | PRODUCTS

Dual Compression Technology
MJPEG & MPEG4



Quickstart Guide



Safety Precautions

Power off the IP Camera immediately and contact your distributor:

1. When the IP Camera is found smoking or gives off unusual burning smell.
2. When liquid got into the Video Server, and it is wet.



Keep the IP Camera away from direct sunlight.



Keep the IP Camera away from high humid environments.



Keep the IP Camera away from flammable material or high temp.



Do not touch the IP Camera when lightening occurs.



Do not drop the IP Camera. Please handle it carefully!



Do not place the IP Camera around the heat source, such as TV or oven.



WEEE (Waste Electrical and Electronic Equipment)

Customers in European Union countries are advised to dispose of this product, at the end of its useful life, as per applicable local laws, regulations and procedures

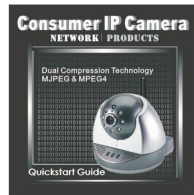
1 Unpacking

Check to make sure that all of the items shown below are included with your IP Camera. If something is missing, contact your dealer as soon as possible.

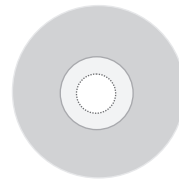
❖ IP Camera



❖ Quick Guide



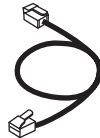
❖ CD-ROM



❖ Power Adaptor



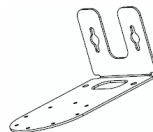
❖ Network Cable



❖ DI/ DO Cable



❖ Stand

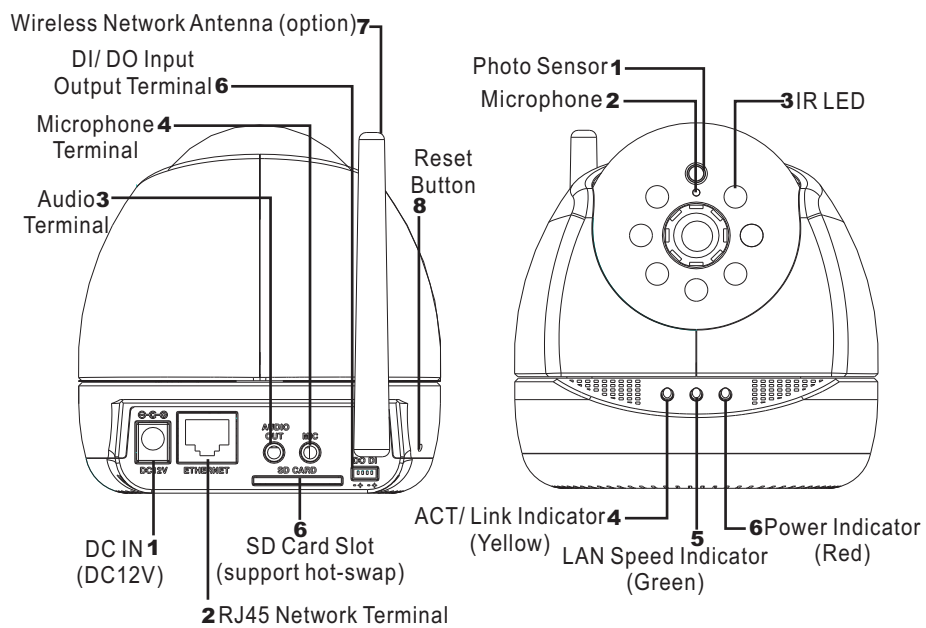


2 General Guide

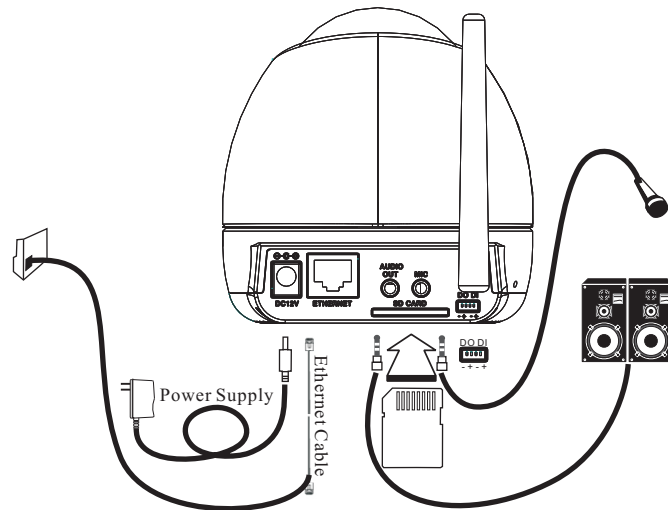
The following illustrations shows the name of each physical component on the IP Camera.

❖ Front View

❖ Rear View



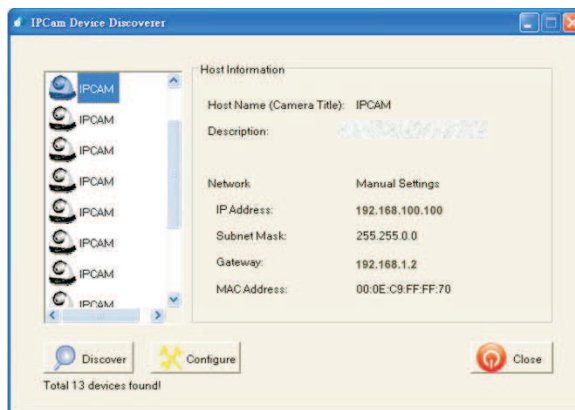
3 Get Connected - Rear Panel



- 1 Connect microphone or other audio input to MIC to enable audio recording.
- 2 Connect audio signals to speakers to enable audible sound.
- 3 Connect the camera to your network using standard RJ-45 10/100 Based-T Ethernet cable.
- 4 Insert SD card (metal contacts facing upward) into the slot as storage media.
- 5 Connect to DI/ DO serial connection block for external sensor (DI) and alarm(DO).
- 6 Finally Connect the power supply cable to the power socket. The Power indicator flashes when power-on.

4 Assign IP Address

Use Discoverer utility, a free application that discovers and displays the IP Camera on your network.

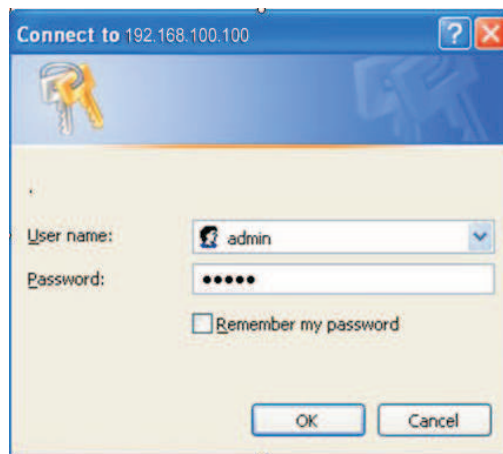


- 1 From the box list, select and double click the desired IP Camera, the system opens an IE browser and auto connects to the selected IP Camera.
- 2 To refresh the search for LAN connected IP Camera, click Discoverer button and after 4 second the system will display the updated IP Camera list.
- 3 Click Close button to terminate the software.
- 4 Click Configure button, the system will open up a Configure Network Device Dialog.

5 Access IP Camera

The IP Camera can be accessed either by Discoverer utility or simply by typing the IP address in the windows IE browser.

When a dialog box appears, enter the username and password (Default User Name: admin and Default Password: admin).



This Quick Start Guide illustrates the basic setups of the IP Camera. For more detailed information, please refer to the User Manual.